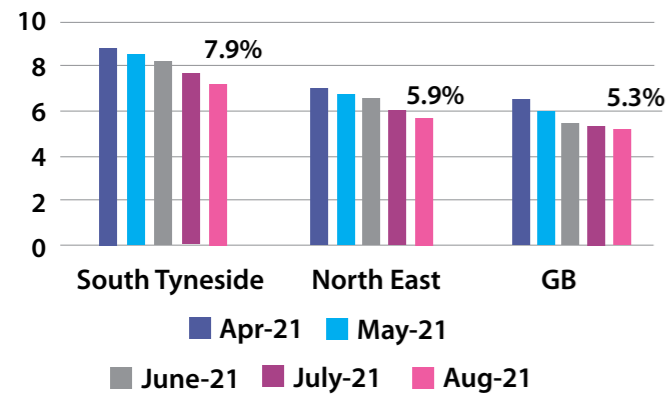


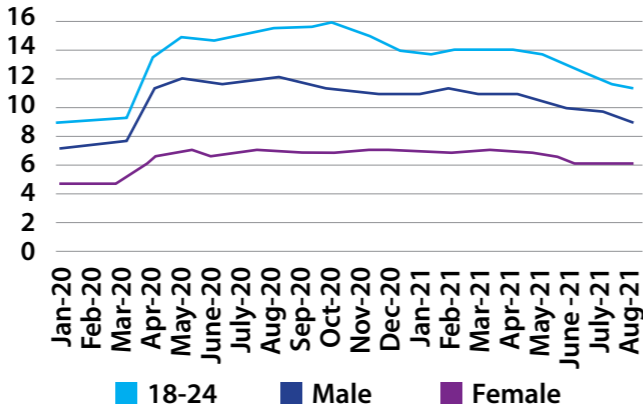
SOUTH TYNESIDE MONTHLY ECONOMIC MONITOR SEPTEMBER 2021

1. The claimant count continued its fall since March 2021 with a 0.2% drop in August (particularly among young people), although concerns about economic inactivity and long-term unemployed.

Unemployment Claimant Count % of population - August 2021

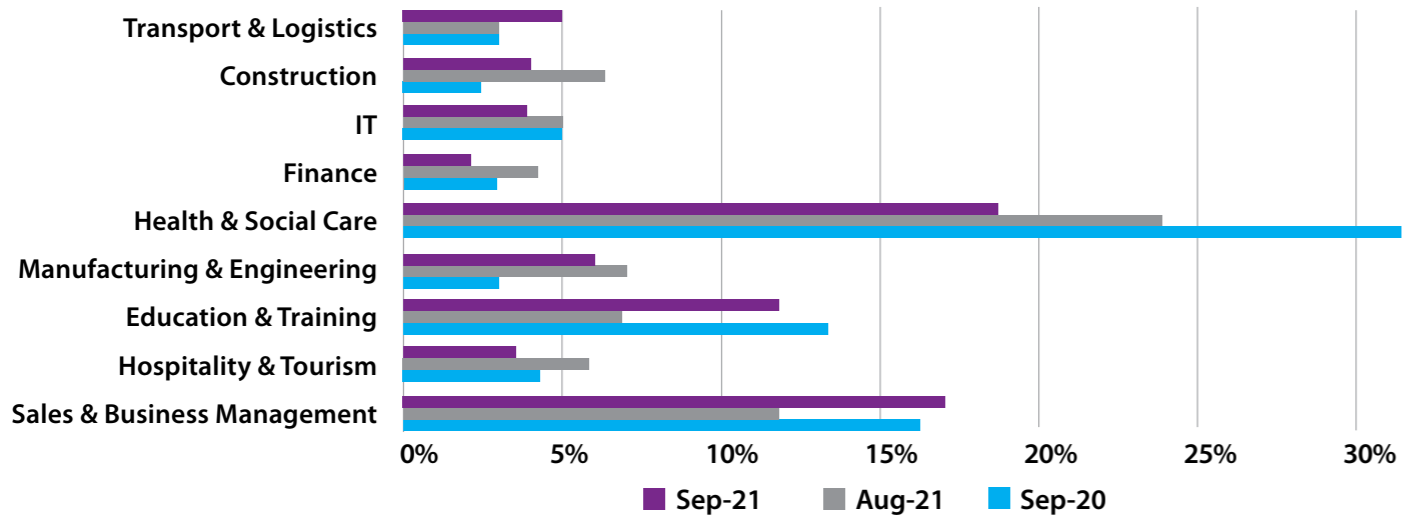


Unemployment by age/gender - August 2021



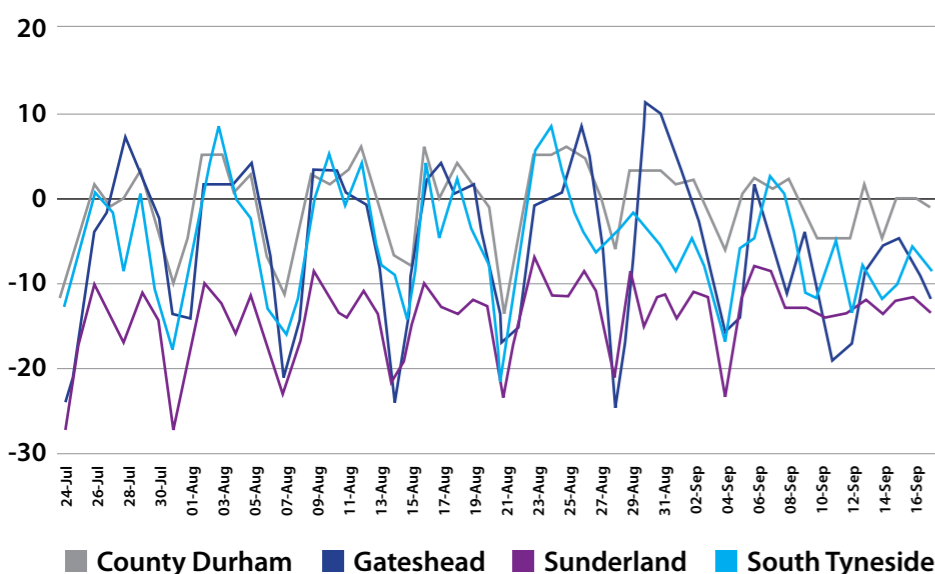
3. Vacancy levels dipped in Sept (down 19% compared to Aug) but remain way up on 2020. The largest sectors remain health and social care, sales and education sectors (with increased demand from employers for sales, business management, storage and customer service occupations).

Jobs advertised in the Borough by Sector - Sept 2020 - Sept 2021



5. September saw growth in the creative, engineering, logistics, offshore wind and hospitality sectors, while footfall levels are 90% of pre-pandemic rates (peaks during August bank holiday and the start of Sept).

Retail and recreation: Google visit index (Compared to early 2020)

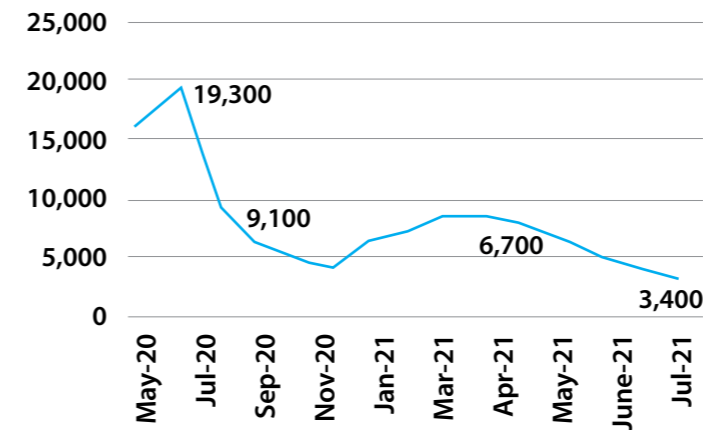


Positive growth in September from South Tyneside businesses in the creative (Katy Sue Designs acquiring a new manufacturing firm), engineering (NECIT Inspection Services hitting a milestone while exporting to 75 countries worldwide), logistics (more tea companies deciding to use the Port of Tyne to save money and carbon emissions), offshore wind (further positive news from Equinor's Operations and Maintenance Base, while the Jarrow Business Centre Manufacturing Zone has opened for high-growth SMEs) and hospitality (new Deja View coffee shop in East Boldon creating jobs and success following reopening for Rosies II) sectors. In addition, Darling's Pharmacy in Chichester has reopened following a significant expansion.

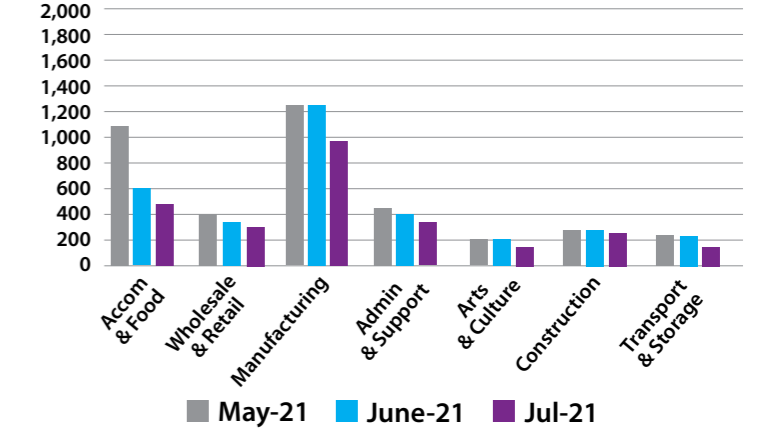
Positively, no publicly-announced job losses this month, but concerns about the impact of the Furlough scheme closing at the end of September.

2. The number of residents Furloughed continues to fall (largely due to drop amongst hospitality workers) and the scheme finishes this month amid concerns about manufacturing and hospitality (the two largest sectors).

Furloughed workers in South Tyneside - July 2021

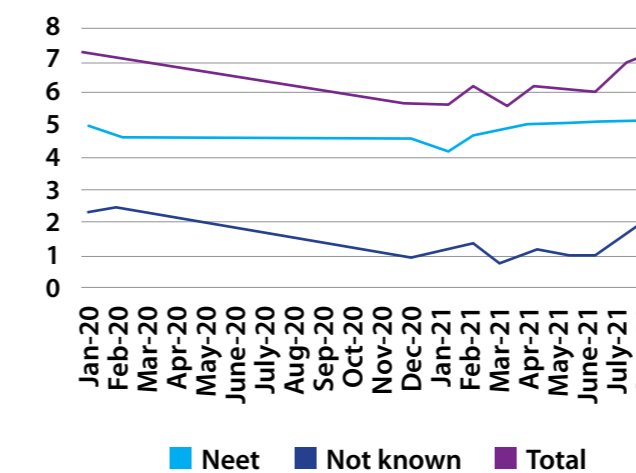


South Tyneside residents on Furlough - May 2021 to July 2021

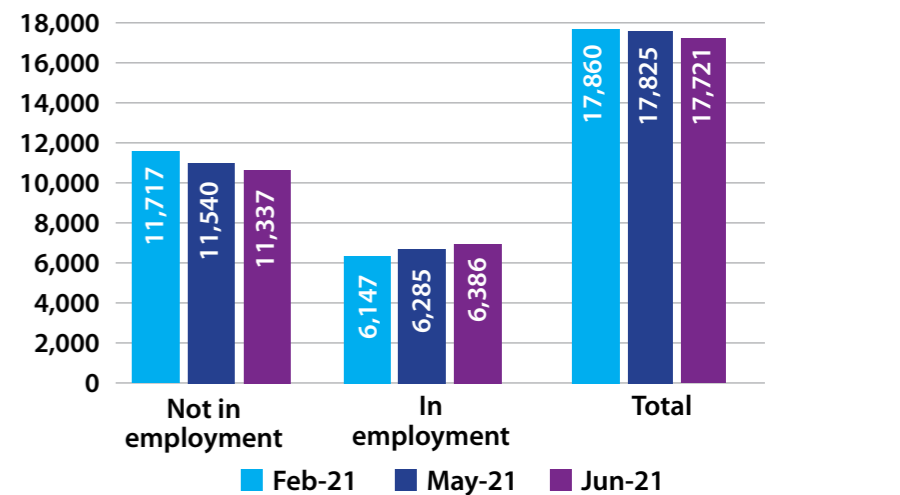


4. NEET rates rose in August (driven by not-knowns, partly a seasonal effect), while residents in work on Universal Credit saw a continued increase (highlighting potential in-work poverty that could be impacted by the UC uplift ending).

NEET levels - Jan 2020 to Aug 2021

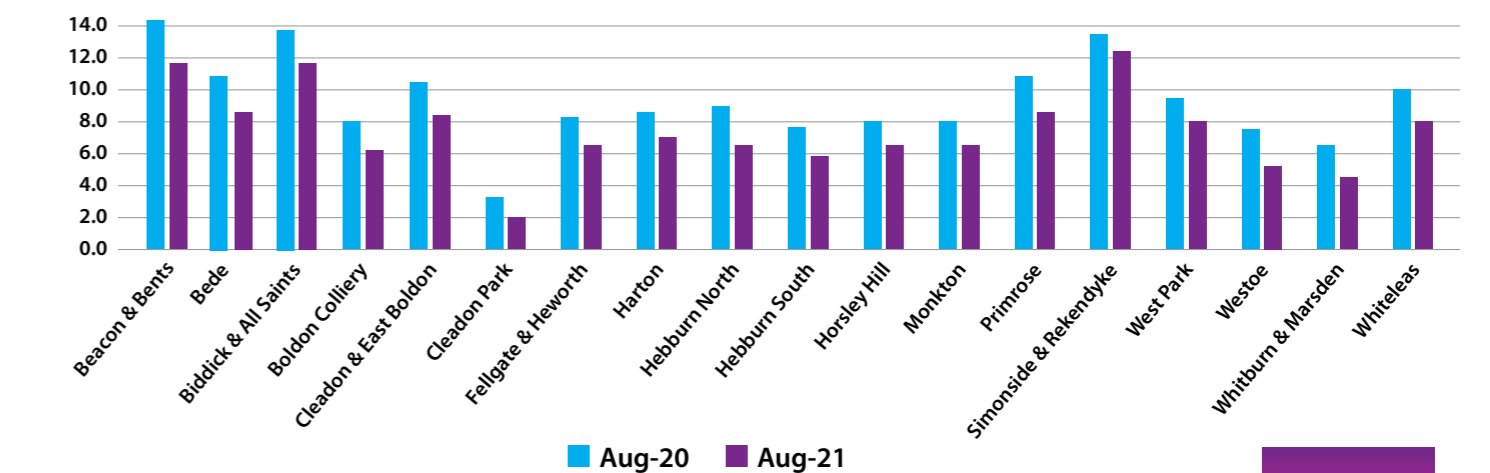


People on Universal Credit in South Tyneside - May to June 2021



6. New data on unemployment by ward shows rates coming down compared to a year ago across all wards, particularly in those with the highest rates (although they are still considerably above the Borough average).

Unemployment claimant count in South Tyneside wards (August 2020- August 2021)



Sources are from ONS and other national and local data; all available upon request

